

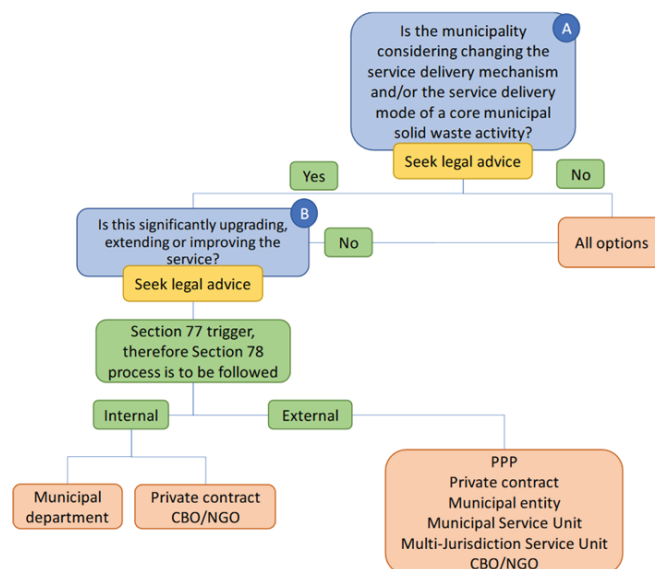
The Assessment of Various Institutional Models for Providing Waste Management Services



Municipalities in South Africa have adopted different institutional models and mechanisms for delivering the municipal solid waste function for a range of reasons: strategic choices, historical reasons, or based on a need to supplement shortfalls in capacity or resources. However, there are a range of service delivery mechanisms for solid waste activities which may be available to municipalities in different circumstances. The available options depend on the scope of the change in municipal service which is being envisaged, and the extent to which this municipal service is a core service, as provided for by the Constitution.

PDG was commissioned by the South African Local Government Association (SALGA) to conduct research that will assist municipalities in their assessment of the various institutional models that are available to municipalities for providing solid waste management services. To do this, PDG conducted case study research in 30 municipalities to understand the current practices regarding solid waste management, and the level of understanding of the institutional models that are available to municipalities.

The research provides municipalities with a more in-depth understanding of the range of institutional models and contract types which are available to them, and which may be more adaptive to challenges and evolving technological and supply chain demands. In order to clarify some of the uncertainty created with the legislation governing the sector and highlight the considerations that need to be made in selecting a service delivery option, a decision-making process was set out. This process assists municipalities in making more informed choices to deliver a more efficient municipal solid waste service



The decision-making process for solid waste management institutional arrangements and possible outcomes thereof

Project Leader:

Brendon van Niekerk
+27 21 6711402 / brendon@pdg.co.za

SWIM PROJECT:

Project Profile: The Assessment of Various Institutional Models for Providing Waste Management Services

Client: South African Local Government Association Programme

Date: 2018 - 2019